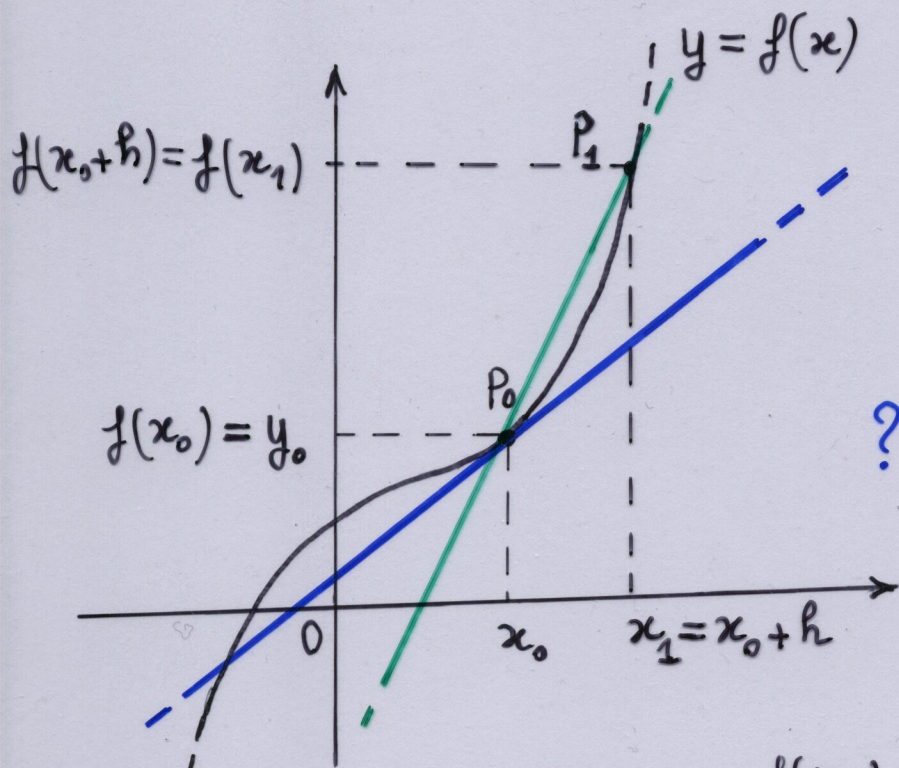
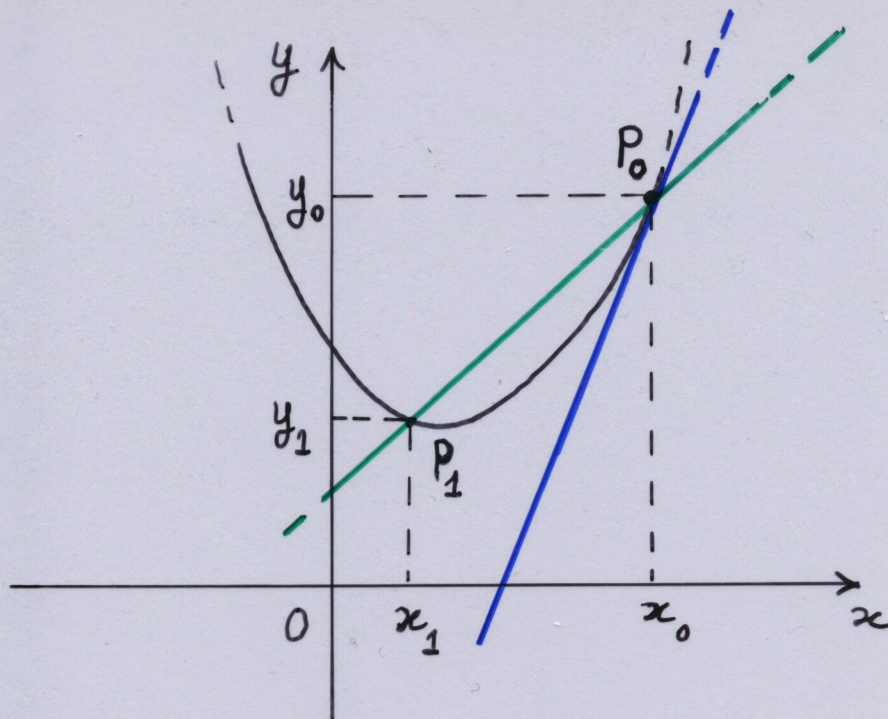


# RETTA TANGENTE IN UN PUNTO AD UNA CURVA



$$y - f(x_0) = m(x - x_0)$$

? coefficiente angolare

retta per  $P_0$  e  $P_1$ : 
$$y - f(x_0) = \frac{f(x_1) - f(x_0)}{x_1 - x_0} (x - x_0)$$

$$m = \lim_{x_1 \rightarrow x_0} \frac{f(x_1) - f(x_0)}{x_1 - x_0} = \lim_{h \rightarrow 0} \frac{f(x_0 + h) - f(x_0)}{h}$$